

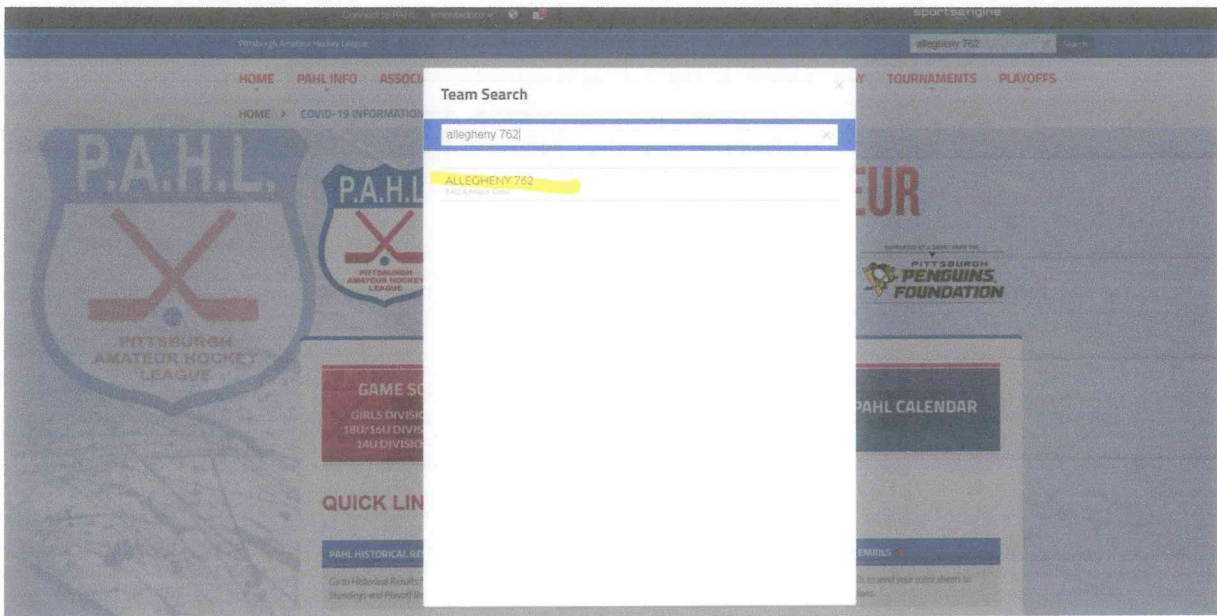
SPORTS ENGINE- STEP BY STEP INSTRUCTIONS

All home game stats must be entered into the Sports Engine website by Monday at 6PM

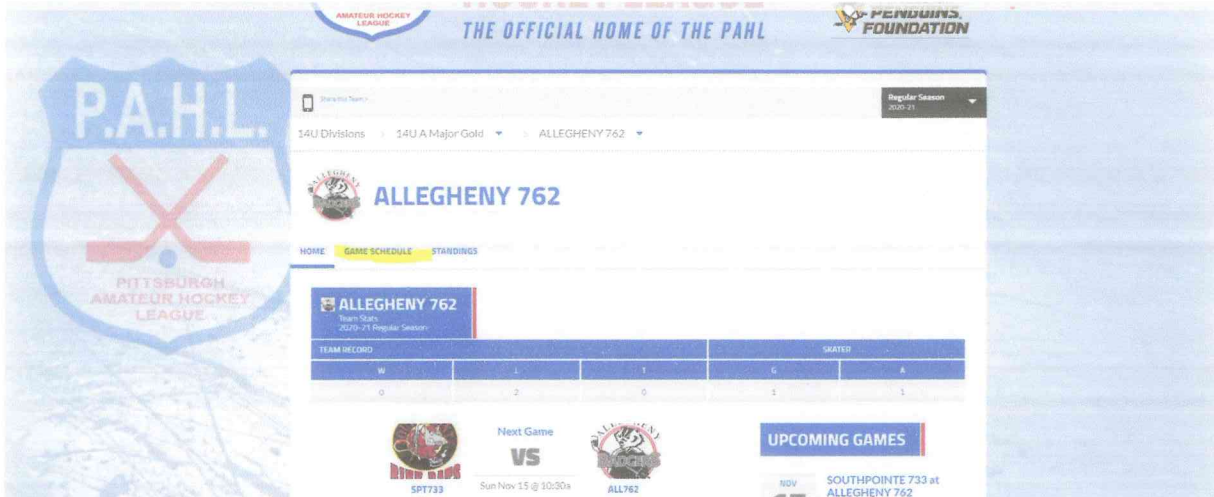
1. To access the Sports Engine system you must go through the PAHL website at www.Pahockey.com
2. In the upper right corner type your team name in the "Team Search" box. Example: Allegheny 762



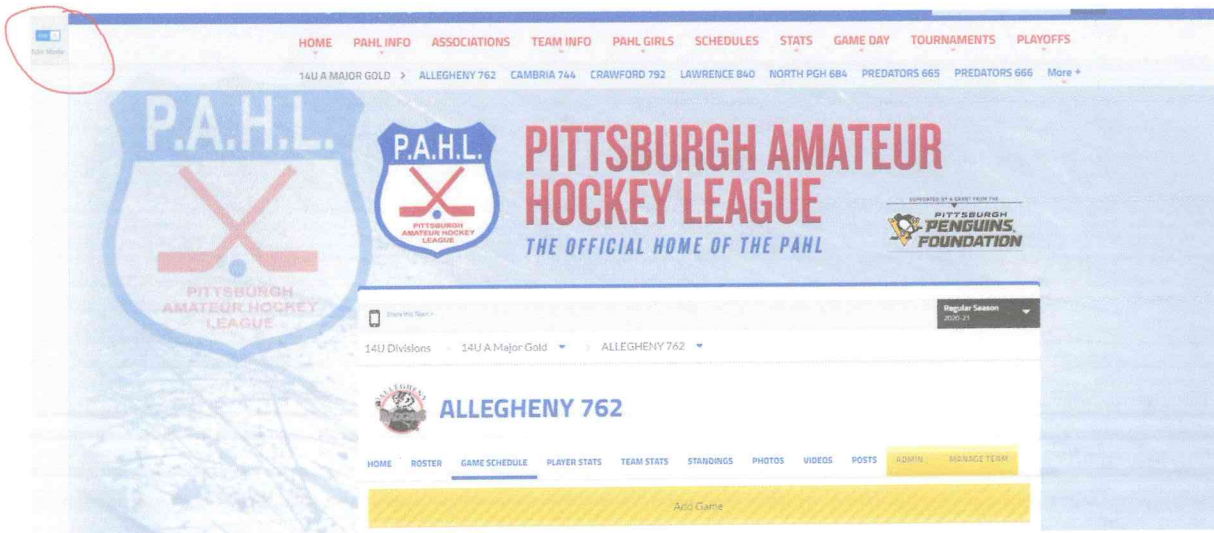
3. A white box will pop up in the middle of the screen and you can then select your team.



4. Your teams Sports Engine page will then be on the screen. You will need to select where it says Game Schedule.



5. Once you see your teams schedule on the screen, you will need to go to the left side of the page where it says Edit Mode and make sure the box says On, otherwise you will not be able to input the stats.



6. You will then look through the schedule and find the game that you are entering, and click on the Game time for that game, the times are in the last column on the right.

GAME ID	DATE	RESULT	OPPONENT	LOCATION	STATUS
3315	Sat Oct 24	L 1-4	@ NORTH PGH 684	BIC	FINAL
3379	Sat Oct 31	L 0-5	@ WESTMORELAND 848	Kirk Nevin Arena	FINAL
3362	Sun Nov 15	-	SOUTHPOINTE 733 (0-1-0)	DELM	10:30 AM EST
3353	Spt Nov 21	-	@ CAMBRIA 744 (1-0-1)	WARM	11:45 AM EST
3361	Sun Nov 22	-	WESTMORELAND 848 (1-0-0)	DELM	12:30 PM EST
3368	Sat Dec 12	-	PREDATORS 665 (0-1-0)	DELM	9:20 AM EST
3364	Sat Dec 12	-	PREDATORS 666 (0-1-0)	DELM	4:00 PM EST
3353	Sun Dec 13	-	@ LAWRENCE 840 (1-0-1)	HESS	10:30 AM EST
3365	Sat Dec 19	-	NORTH PGH 684 (1-0-0)	DELM	11:45 AM EST

7. You will see a yellow box come up on the screen with the Game Status information. You want to select the box that says SCORE LIVE.

HOME ROSTER GAME SCHEDULE PLAYER STATS TEAM STATS STANDINGS PHOTOS VIDEOS POSTS ADMIN MANAGE TEAM

GAME STATUS

SCHEDULED | **SCORE LIVE** | FINAL

SCORE LIVE QUICK SCORE EDIT STATS

Quick Scores will be updated for this game.

Quick Scores will be updated for this game.

8. A new web page will open up and you will see the game details. You want to make sure that the game date and time are correct. You can then enter the following information;

Venue: Center Ice

Referee: (Enter the Referees Name)

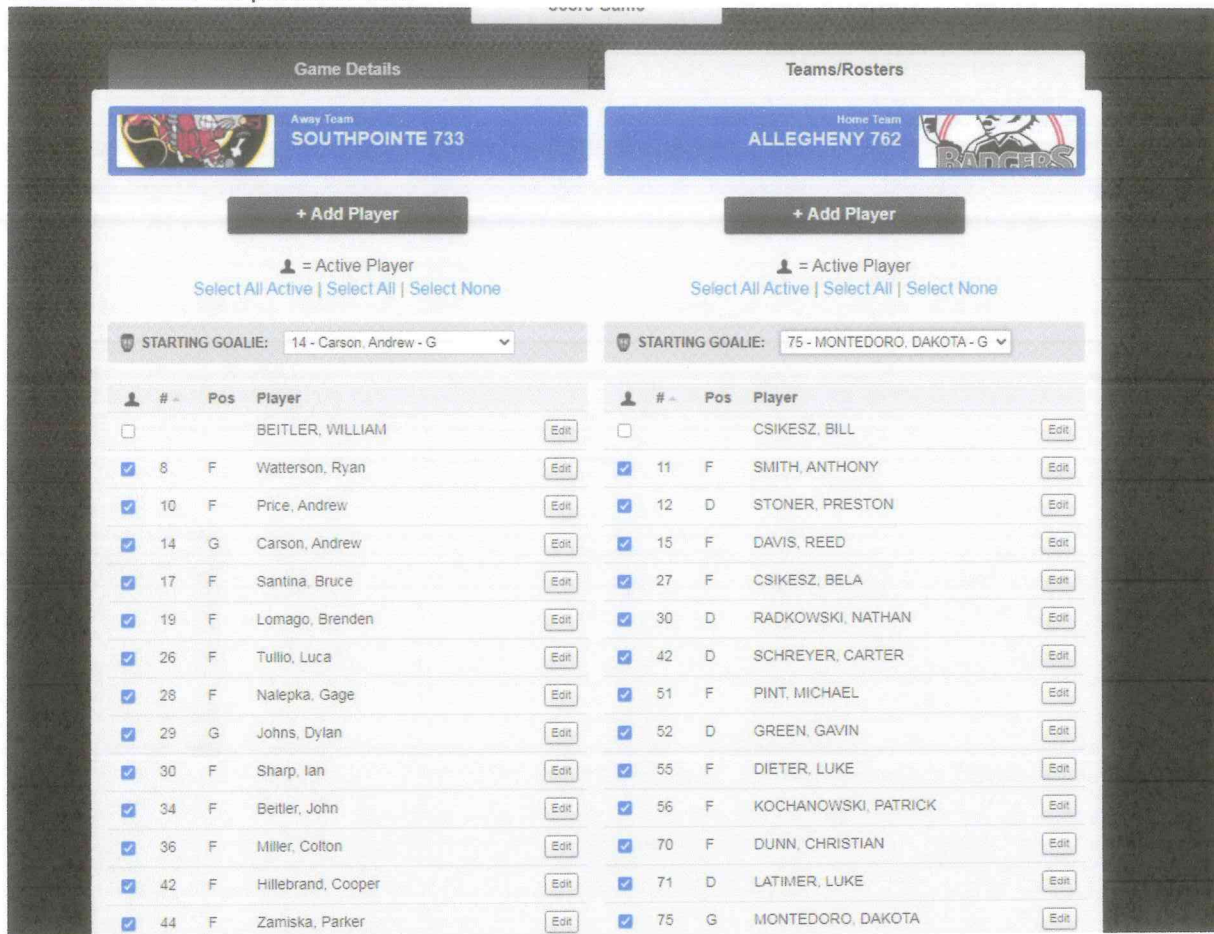
Then click on Save Game Details at the bottom of the page

The screenshot shows a web application interface for entering game details. At the top, there is a 'Score Game' button. Below it, the 'Game Details' tab is selected, and a 'Save Game Details' form is open. The form is divided into several sections:

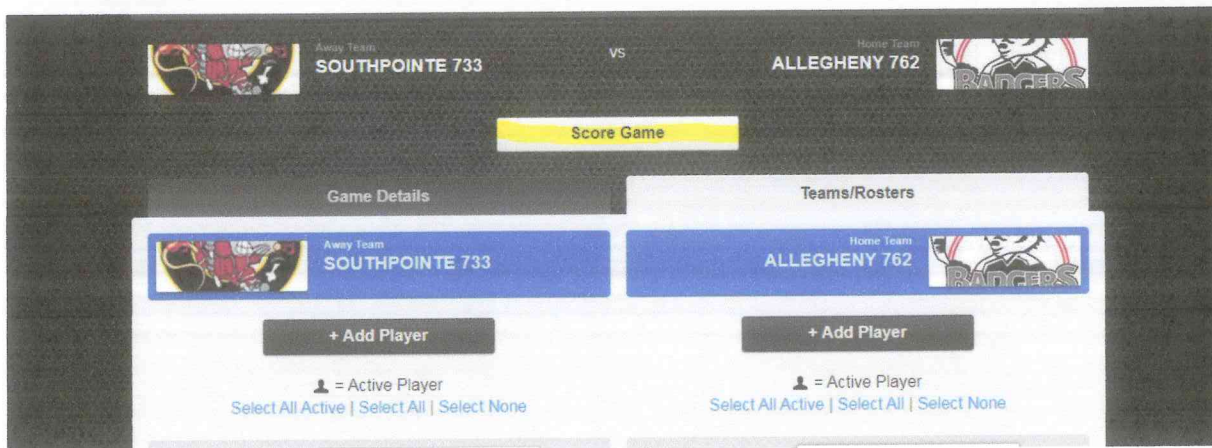
- SCORING:** Includes checkboxes for 'THIS GAME IS BEING SCORED LIVE' (checked) and 'TRACK PLAY LOCATIONS' (unchecked).
- LOCATION & WEATHER:** Includes input fields for 'VENUE', 'MAP/LINK', and 'ATTENDANCE'. There is also an 'Add Referee' button.
- REFEREES:** A section for adding referees.
- GAME TIME & LENGTH:** Includes a 'DATE' field (11/15/20) and a 'TIME' field (10:30 AM).
- GAME STATUS:** A dropdown menu set to 'Scheduled'.
- PERIODS:** Three input fields for periods, each with an 'X' button, and an 'Add Period' button.
- WEATHER & TEMPERATURE:** Includes input fields for 'WEATHER' and 'TEMPERATURE' (with a unit dropdown set to '°F').
- WIND:** Includes input fields for 'WIND' (with a unit dropdown set to 'MPH') and 'DIRECTION' (set to 'NW').

At the bottom of the form, there is a 'Save Game Details' button.

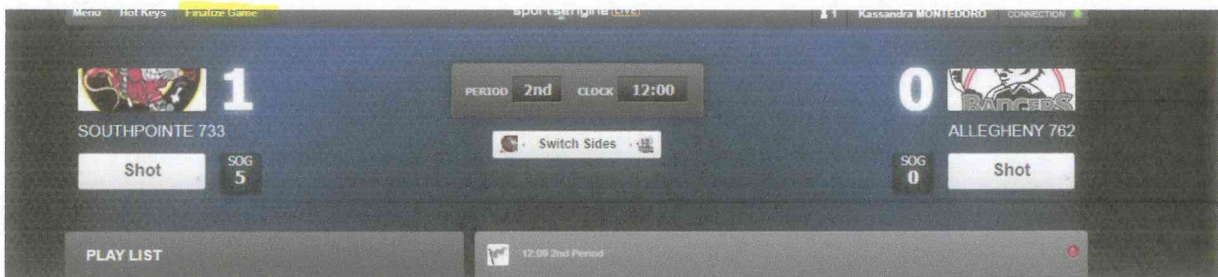
- You then need to click on the upper right tab that says Teams/Rosters. Then select each of the players who played in the game for both teams by selecting the box next to their name. Also, Select the head coach for each team (This is in case there is a penalty to the Head Coach, the name is there to be selected). You can then select the starting goalie for each team by choosing their name from the pulldown box.



- Once all players, the Head Coaches, and goalies are selected you will click on the box in the middle of the screen that says "Score Game"



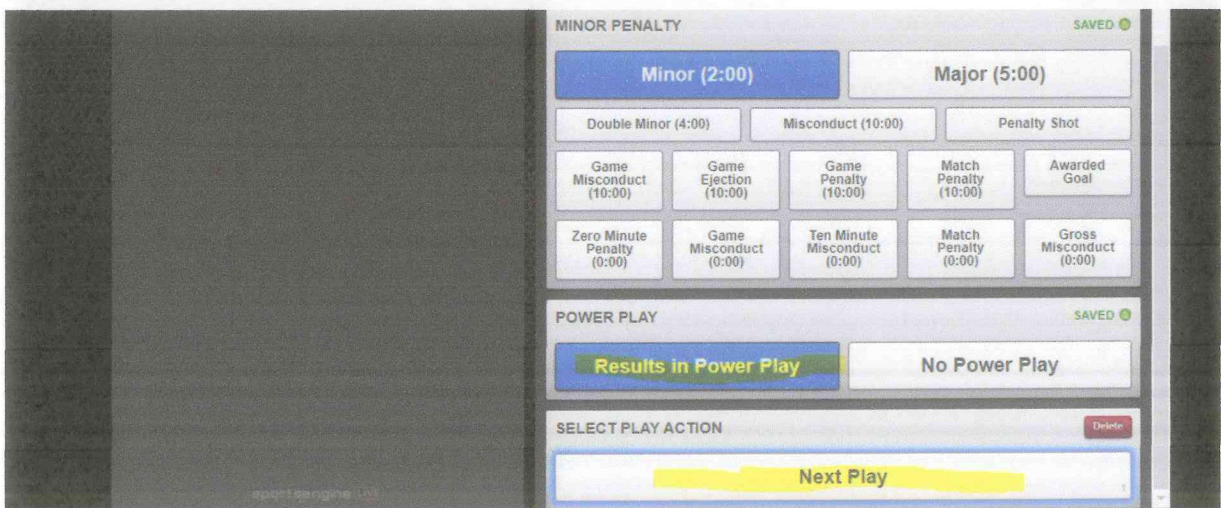
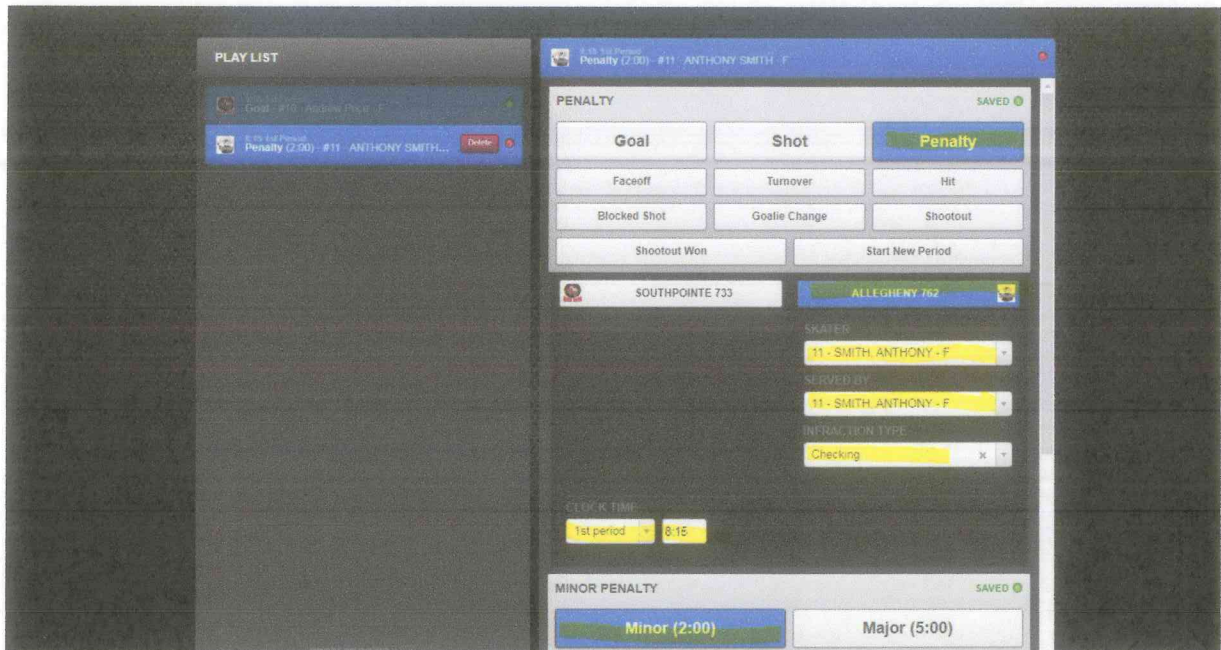
16. Once everything is entered for all 3 periods, you will select "Finalize Game" at the upper left corner. You will then see a box pop up asking for the referees name, and also the fair play points for each team. For the Fair Play points you must add up the total amount of penalty minutes for the home team, and then the total amount of penalty minutes for the away team.
- If the team has 16 or less penalty minutes and No Game Misconduct or Match for the coach, THEN ADD 1 FAIRPLAY POINT
 - If the team has 17-32 penalty minutes, THEN THEY GET 0 FAIR PLAY POINTS
 - If the team has over 32 penalty minutes, SUBTRACT 1 FAIRPLAY POINT



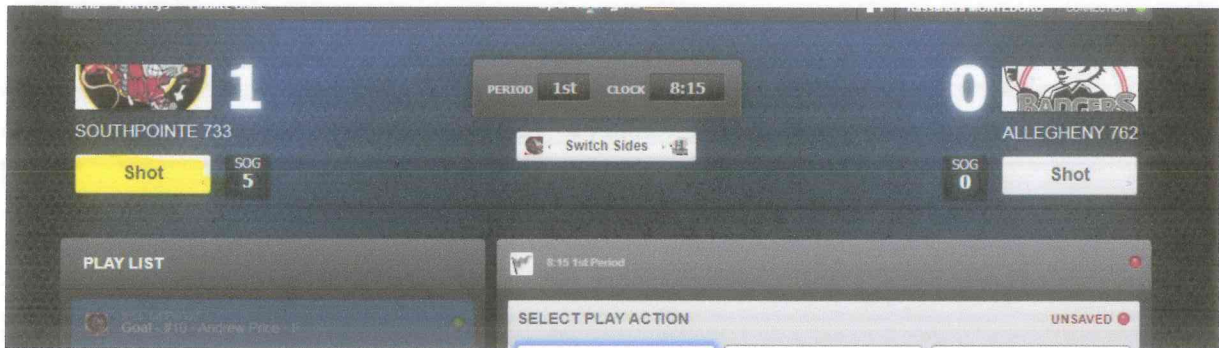
11. You will now start entering the stats for the 1st period. You will begin by entering in the goals for period 1. You will want to select the "Goal" Button, then select which team scored the goal, then choose the player who scored from the pull down menu, and then any assists on that goal from the pull down menus. Then in the clock time make sure the period is correct, and enter the time that was on the clock. Then select which type of goal whether Even Strength, a Power Play, or Short Handed, and select NEXT PLAY. You will do that for each goal scored in the first period.

The screenshot shows a software interface for recording game events. At the top, the score is 1-0 in favor of Southpointe 733 over Allegheny 762. The period is 1st and the clock is at 12:00. A 'GOAL' event window is open, showing a list of goal types: Goal, Shot, Penalty, Faceoff, Turnover, Hit, Blocked Shot, Goalie Change, Shootout, Shootout Won, and Start New Period. The 'Goal' type is selected. The scorer is set to '10 - Price, Andrew - F' and the goalie is '75 - Montedoro, Dakota - G'. Assists are set to '8 - Watterson, Ryan - F' and 'Bench'. The clock time is '1st period' at '9:55'. Below the goal window, an 'EVEN STRENGTH GOAL' window is visible with 'Even Strength' selected.

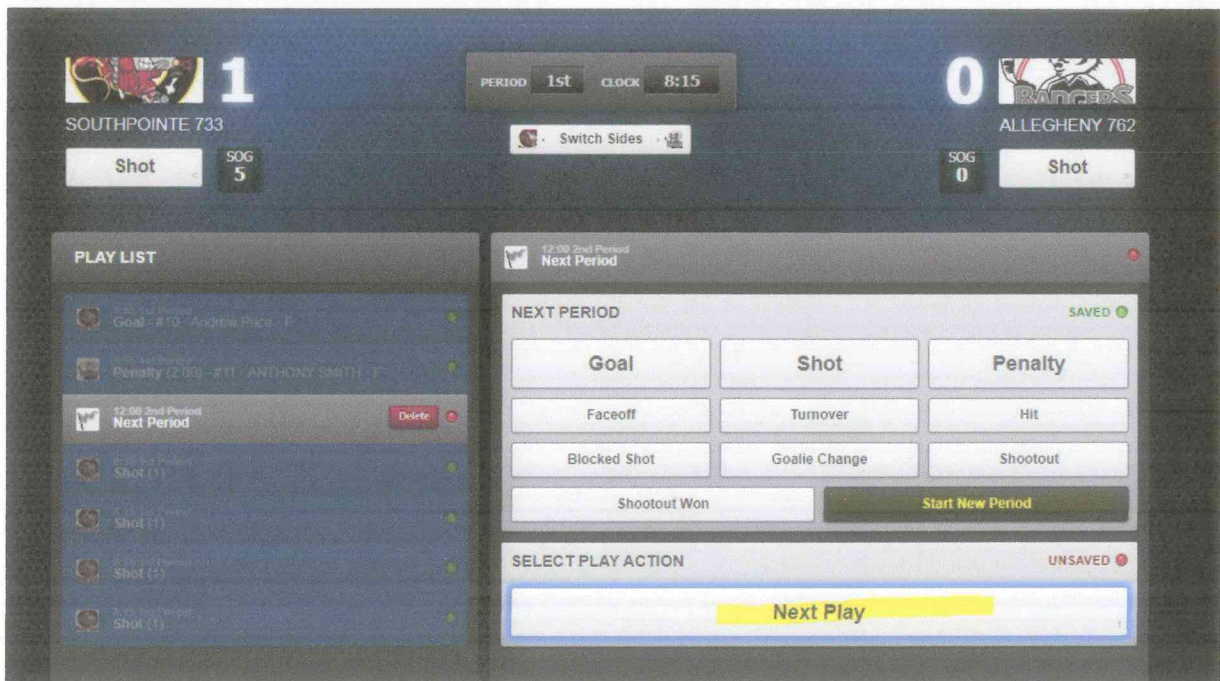
12. You will now want to enter in any penalties from that first period. You select the "Penalty" button, then the team, and select the player who received the penalty in the pull down box, and the player who served the penalty, and then the infraction. In the clock time box made sure the period is correct, and then type in the time the penalty was given. You then select the Penalty whether Minor (2 Min), Major (5 Min), Etc. Then select whether is results in a power play, and then click NEXT PLAY. You will do that for each penalty assessed in the first period.



13. You will now want to enter the shots on goal for each team during that first period. You only need to enter the shots that did not result in a goal, because the shots that did result in a goal were automatically added when you entered the goal. So, if your team had 5 shots on goal in the 1st period, and the goalie saved 4 of those, you would enter in the 4 shots he saved. You enter the shots by pressing the SHOT button under the team's name, each time you press it a shot will be added.



14. Once all stats are entered for the first period, you will click on the "Start New Period" button, and then select "Next Play"



15. You will now go back to Step 11 -14 and enter in the starts for the 2nd period. Then again for the 3rd period.